

North Orange County Community College District

Cypress College

Fullerton College

School of Continuing Education

Budget and Financial Report

*Bond Oversight Committee Meeting
March 2, 2011*

Summary of Significant Events as of December 31, 2010

CYPRESS COLLEGE



CYPRESS COLLEGE CONSTRUCTION

BOND FUND \$80,348,735

- Library/Learning Resource Center
- Piazza/Infrastructure Repair
- Remodel for Efficiency
 - Administration College Complex
 - Business Education
 - Gym I
 - Gym II
 - Humanities
 - Student Activities Center
 - Tech Ed I
 - Tech Ed II
 - Tech Ed III
 - Theater Arts
- Maintenance & Operations Facility
- Disabled Elevator Project
- Central Plant
- Access Plan
 - Campus Signage
 - Gateway Plaza
 - Tennis Courts
- Student Center/Bookstore
- SCE Center Administration @ Cypress
- Parking Lot Expansion
- Anaheim Campus – Culinary Arts
- Future Projects
 - Fine Arts
 - Science/Engineering/Math
 - Tech Ed I Renovation



LIBRARY/LEARNING RESOURCE CENTER

SIZE: 62,500 SF

Before



Bond Funds	\$ 6,782,157
Capital Outlay	<u>14,545,000</u>
Total	\$ 21,327,157

After





PIAZZA INFRASTRUCTURE REPAIRS

SIZE: 157,000 GSF



Before



After



Before

Bond Funds	\$ 3,301,375
Capital Outlay	7,614,848
Insurance	450,000
Redevelopment Funds	<u>515,244</u>
Total	\$ 11,881,467



REMODEL FOR EFFICIENCY

ADMINISTRATION COLLEGE COMPLEX

SIZE: 85,130 SF

Bond Funds	\$ 2,542,538
Campus Funds	107,236
Campus RFE	<u>214,037</u>
Total	\$ 2,863,811



Administration



3rd & 4th Floor Move-in



REMODEL FOR EFFICIENCY BUSINESS EDUCATION

SIZE: 52,663 SF

Bond Funds \$2,076,601





REMODEL FOR EFFICIENCY

GYM I & II

GYM I SIZE: 26,854 SF

GYM II SIZE: 52,668 SF



Gym I



Gym II

Bond Funds:

Gym I	\$ 21,565
Gym II	<u>897,988</u>
Total	\$ 919,553





REMODEL FOR EFFICIENCY HUMANITIES

SIZE: 3-STORY, 92,084 SF



Capital Outlay	\$ 17,396,442
Bond Funds	4,048,781
Swing Space/Bond	<u>2,410,925</u>
Total	\$ 23,856,148





REMODEL FOR EFFICIENCY STUDENT ACTIVITIES CENTER

SIZE: 18,071 SF





REMODEL FOR EFFICIENCY

TECH ED I, II, & III

TECH ED I SIZE: 43,259 SF

TECH ED II SIZE: 23,326 SF

TECH ED III SIZE 72,230 SF



Tech Ed I



Tech Ed II



Tech Ed III

Bond Funds:

Tech Ed I	\$	1,364,271
Tech Ed II		1,070,836
Tech Ed III		<u>1,781,262</u>
Total	\$	4,216,369



REMODEL FOR EFFICIENCY THEATER ARTS

SIZE: 48,392 SF



Bond Funds \$1,171,638



MAINTENANCE & OPERATIONS FACILITY

SIZE: 13,500 SF



Bond Funds \$4,896,758



REMODEL FOR EFFICIENCY

DISABLED ELEVATOR PROJECT

ADMINISTRATION, BUSINESS EDUCATION, FINE ARTS, TECH ED I/II



Administration



Fine Arts



Tech Ed I



Business Education

Bond Funds	\$ 1,884,776
Campus Funds	<u>128,897</u>
Total	\$ 2,013,673



CENTRAL PLANT



District Funds	\$ 7,898,890
Bond Funds	<u>230,366</u>
Total	\$ 8,129,256





ACCESS PLAN CAMPUS SIGNAGE





ACCESS PLAN GATEWAY PLAZA



Bond Funds	\$	49,026
Campus Funds		<u>999,128</u>
Total	\$	<u>1,048,154</u>



ACCESS PLAN

TENNIS COURTS



Bond Funds	\$ 871,704
Campus/City Funds	<u>210,427</u>
Total	\$ 1,082,131



STUDENT CENTER & BOOKSTORE

STUDENT CENTER SIZE: 38,207 SF

BOOKSTORE SIZE: 8,791 SF



Bond Funds	\$ 28,319,095
District Funds	<u>2,264,346</u>
Total	\$ 30,583,441



SCE CENTER ADMINISTRATION

SIZE: 12,500 SF

Bond Funds	\$ 10,848,223
District Funds	<u>305,951</u>
Total	\$ 11,154,174





PARKING LOT EXPANSION



Campus Funds \$1,144,363



ANAHEIM CAMPUS - CULINARY ARTS





TEMPORARY BUILDING DEMOLITION



The only project remaining at Cypress College is the demolition of the temporary buildings located at the northeast corner of campus along Holder. All abatement work has been completed. Material and parts which were salvageable, such as white boards, locks, restroom fixtures, have been removed and will be used in other areas on campus. The mandatory job walk for contractors interested in bidding for the demolition work was held on February 9, 2011. The bids are due on February 28, 2011. Board approval of the bids is anticipated on March 8, 2011. The demolition work is scheduled to start on March 14, 2011. The contractor will have 90 days to complete the project. The finish work will leave us with a graded area that can be used for temporary overflow parking.



FUTURE PROJECTS

- FINE ARTS
 - 66,765 sf
 - Estimated Cost: \$27,876,188
 - State \$19,505,188
 - Match \$8,371,000



FUTURE PROJECTS

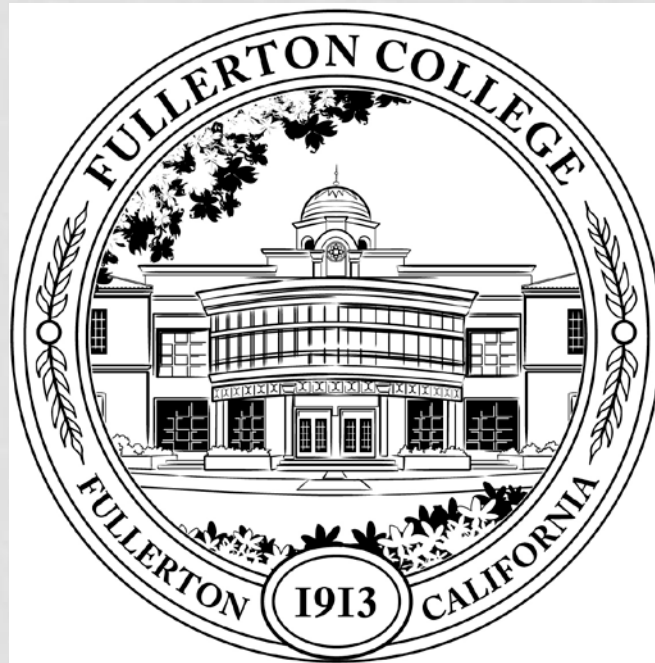
- SCIENCE/ENGINEERING/MATH
 - 100,681 sf
 - Estimated Cost: \$32,404,449
 - State \$16,202,226
 - Match \$16,202,223



FUTURE PROJECTS

- TECH ED I RENOVATION
 - 43,259 sf
 - Estimated Cost: \$15,283,000
 - State \$10,698,000
 - Match \$4,585,000

FULLERTON COLLEGE



FULLERTON COLLEGE CONSTRUCTION

BOND FUND \$148,515,956

- Campus Safety Building
- Chilled Water System
- Classroom & Faculty Office Building
- College Center (Formerly Campus Commons)
- Image Plan (Signage, Site Restoration, Fire Lines/Hydrants/Storm Drains, Fire Alarm & Traffic Signals)
- Library/Learning Resource Center
- Physical Education Facilities
- Remodel for Efficiency (Energy Conservation, Remodel 400 Bldg, 300/500 Bldg Access Plan, Seismic Retrofit 1000 Bldg, & District Education Center Temporary Use Remodel)
- West Parking Structure
- Wilshire Center - School of Continuing Education



CAMPUS SAFETY BUILDING

SIZE: 1,982 SF



Bond Funds	\$ 596,316
Capital Outlay	<u>583,342</u>
Total	\$1,179,658





CHILLED WATER PROJECT



Bond Funds	\$ 4,743,799
District Funds	<u>7,661,313</u>
Total	\$ 12,405,112



CLASSROOM/FACULTY OFFICE BUILDING

SIZE: 48,949 SF



Bond Funds	\$ 21,152,161
District Funds	<u>88,572</u>
Total	\$ 21,240,733





COLLEGE CENTER

(FORMERLY CAMPUS COMMONS)

SIZE: 41,636 SF

Before



Bond Funds \$26,056,483



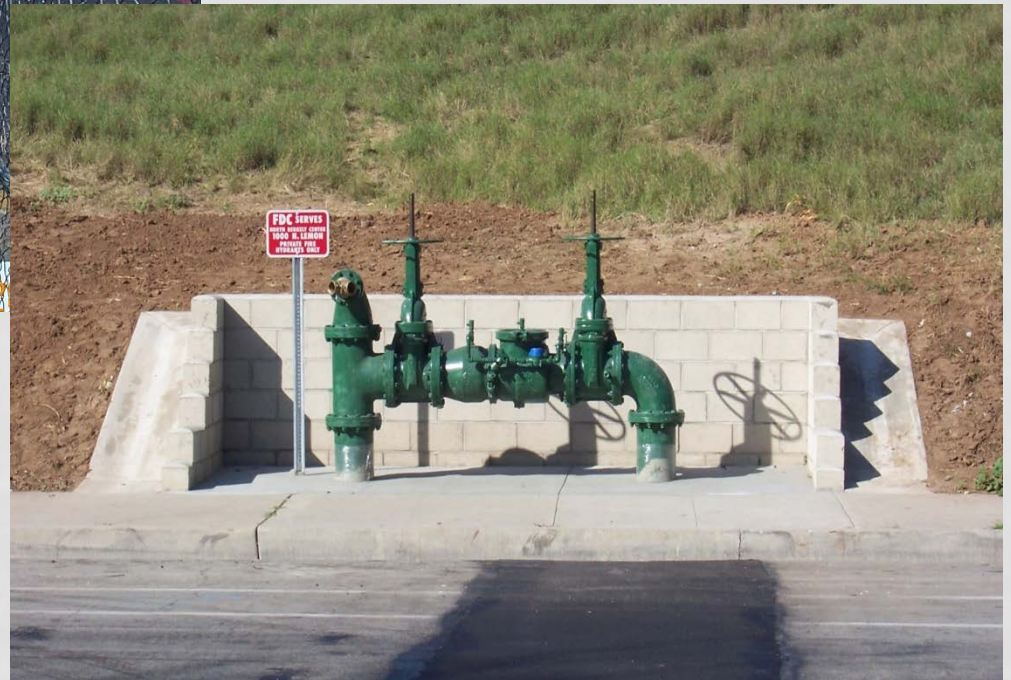
After



IMAGE PLAN

FIRE LINES/HYDRANTS/STORM DRAINS

Bond Funds \$1,170,689





LIBRARY/LEARNING RESOURCE CENTER

SIZE: 67,680 SF



Before

Photo Credit: David Goto (Fullerton College Library)

Bond Funds	\$	6,320,317
Capital Outlay		<u>17,690,330</u>
Total	\$	24,010,647



After



PE RENOVATION PROJECT
FIELD AND FIELD HOUSE

SIZE: 20,000 SF

PE Project Phases 1-4

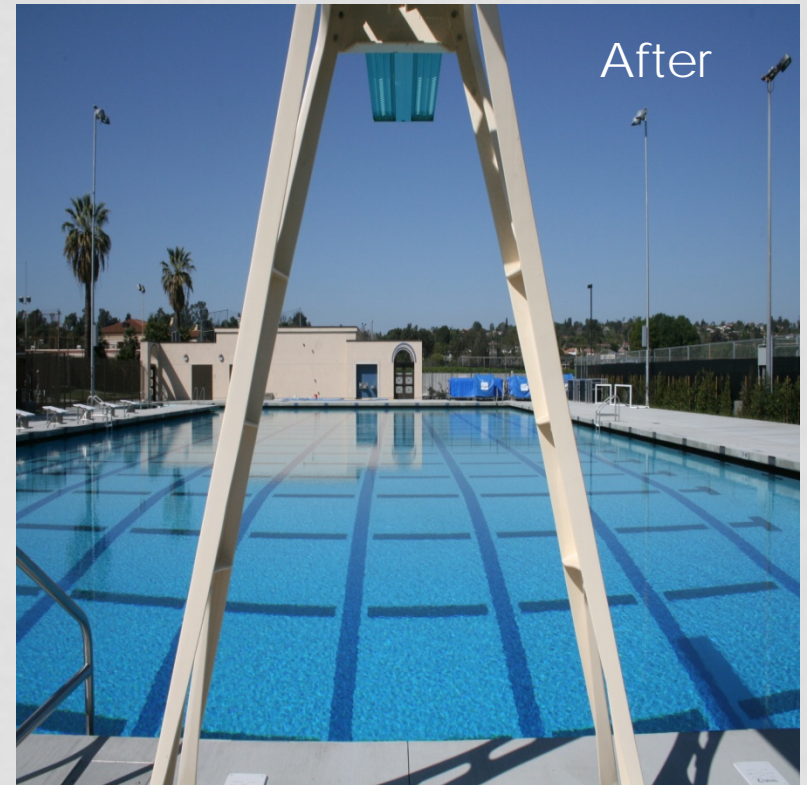
Bond Funds	\$ 32,716,620
Capital Outlay	<u>7,805,391</u>
Total	\$ 40,522,011



The 1200 and Field House projects (Physical Education and Athletics) are completed. The faculty and staff have moved into the facilities and are teaching classes.



PHYSICAL EDUCATION RENOVATION PROJECT





PHYSICAL EDUCATION RENOVATION PROJECT

SIZE: 60,000 SF





REMODEL FOR EFFICIENCY 400 SCIENCE BUILDING

SIZE: 62,595 SF



Bond Funds	\$	12,771,052
Campus Funds		844,609
Capital Outlay		<u>31,268,001</u>
Total	\$	44,883,662

The 400 (Science Center) is complete and classes started as of the Spring Semester 2011.





REMODEL FOR EFFICIENCY 300-500 ACCESS PLAN



Before

Bond Funds \$1,910,199



300 Bldg. After



500 Bldg. After



WEST PARKING STRUCTURE

Before



After



Parking Spaces: 1,400
Bond Funds \$18,782,646



BERKELEY REMODEL

SIZE 16,000 SF



Bond Funds \$2,092,035



1000 BUILDING

SIZE: 39,408 SF

Bond Funds	\$ 195,307
Capital Outlay	<u>2,502,815</u>
Total	\$ 2,698,122





WILSHIRE CENTER SCHOOL OF CONTINUING EDUCATION

100 BLDG SIZE: 7,000 SF

200 BLDG SIZE: 14,000 SF

300 BLDG SIZE: 5,000 SF



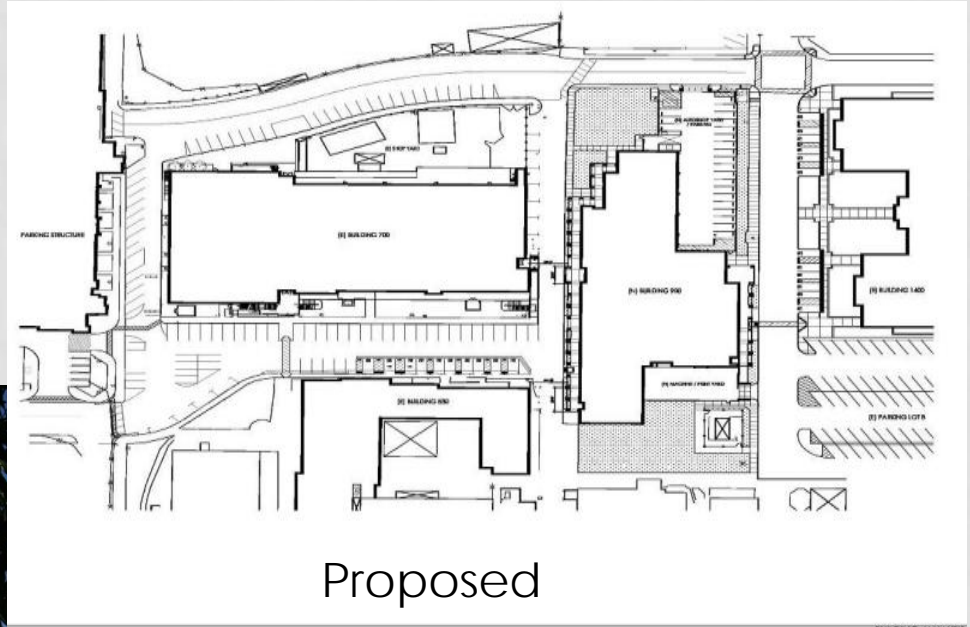
Bond Funds \$7,836,148



TECHNOLOGY COMPLEX

SIZE: 73,911 SF REMODEL 700

SIZE: 28,365 SF REMODEL 900



Proposed



Current

Bond Funds	\$ 5,876,699
Capital Outlay	37,357,015
Campus Funds	<u>10,237,896</u>
Total	\$ 53,471,610

TECHNOLOGY COMPLEX

SIZE: 73,911 SF REMODEL 700

SIZE: 28,365 SF REMODEL 900

The start of the 700-900 (Technology and Engineering) is well under way. The swing space at the Fullerton Village is under way and construction at the La Habra swing space is ahead of schedule. Meetings are held on a weekly basis to develop Furniture, Fixtures, & Equipment and discuss construction issues at each site.



FUTURE PROJECTS

- Music Building, Size 32,619 sf
- 300-500 Building Remodel
 - 300 Bldg. Size 21,000 sf
 - 500 Bldg. Size 32,746 sf
 - Estimated Cost: \$19,081,184
 - State \$9,540,592
 - Match \$9,540,592
- 2000 Building, Size 39,084 sf
 - Estimated Cost: \$14,757,743
 - State \$10,330,512
 - Match \$4,427,231

DISTRICT





ANAHEIM CAMPUS

SIZE: 214,000 SF



Bond Site	\$ 21,569,791
Bond Property	10,470,000
Bond Leasehold	3,938,556
District Funds	<u>14,418,623</u>
Total	\$ 50,396,970



EDUCATIONAL & FACILITIES MASTER PLAN

The District is in the middle of the process to complete a new Educational and Facilities Master Plan. The last comprehensive plan was done ten years ago and was the major focus for the District's 2002 Measure X Bond. By completing a new plan, the District is looking to leverage State Capital Outlay dollars with a second bond issue to complete remaining projects. The District is reassessing the Educational Master Plan intended to focus the plan on "student success" and seeking additional input for the community. Dr. Nancy Byrnes has been brought in as a Professional Expert to wrap up the project. The estimated completion date is May 2011.

This concludes our slide presentation.

Please let us know if we can answer
any questions for you.