

# North Orange County Community College District

Cypress College ▪ Fullerton College ▪ School of Continuing Education

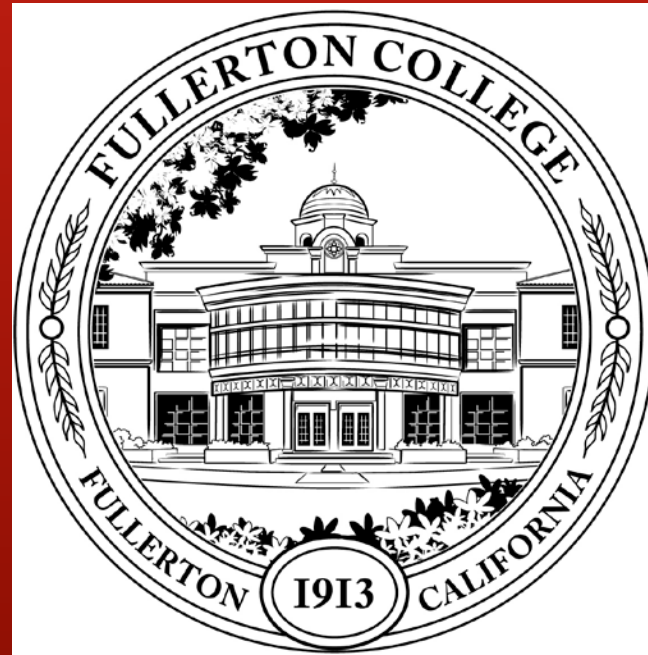
## Budget & Financial Report

Bond Oversight Committee Meeting

September 5, 2012

Summary of Significant Events as of June 30, 2012

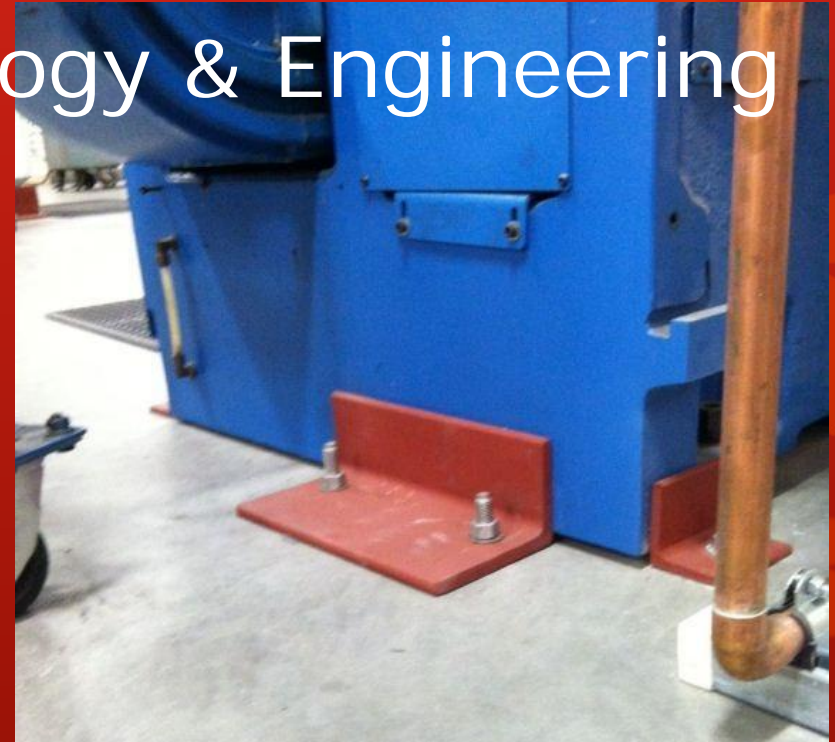
# Fullerton College





# FULLERTON COLLEGE

## La Habra – Technology & Engineering



New slurry and striping has been done on parking lots. In addition, as required by DSA, 75% of the equipment has been anchored and the remaining 25% is scheduled to be anchored in December.



# FULLERTON COLLEGE

## 700 Building (Interior)

Administration of Justice Department, Computer Drafting, Construction Technology, Cosmetology, Fashion, Interior Design, Welding



Building 700 - Fullerton College - Before Construction Started



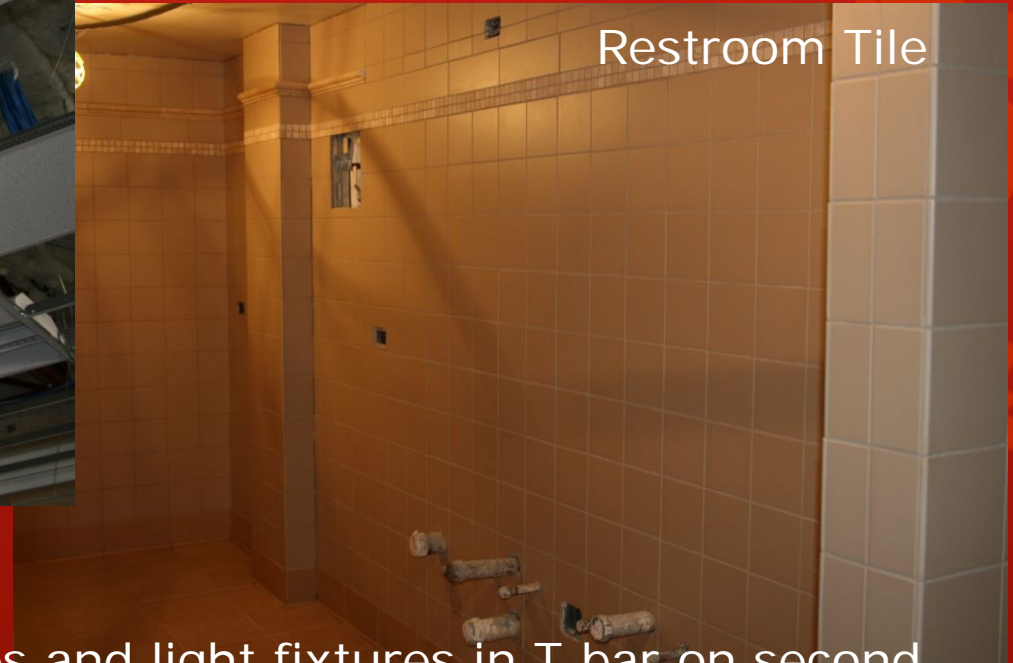
Building 700 - Fullerton College - 8/1/2012





# FULLERTON COLLEGE

## 700 Building (Interior)



Currently installing HVAC grilles and light fixtures in T-bar on second floor. On first floor, electrical work continues, along with T-bar ceiling installation. Tile work in restrooms and Cosmetology areas is in progress and coming along nicely, and work has begun on the new electrical floor boxes at the Electronics Labs.



# FULLERTON COLLEGE

## 700 Building (Interior)



Demolition for the Welding Shop continues. Layout walls and mechanical layout exhaust duct work is also ongoing in the Welding Shop, and we are in the process of ordering materials.



# FULLERTON COLLEGE

## 700 Building (Interior)

An acceptable finish has been approved for the corridor walls with impact board and the existing concrete corridor walls.







# FULLERTON COLLEGE

## 700 Building (Exterior)



Roof repair and coating work continues. Framing work is being done on the South and East elevations, as well as on the elevator tower. Exterior sheathing is being installed at the South and North elevations and reinforced fiber panels are being installed at the South and West elevations.

In addition, installation of architectural precast work and waterproofing for the exterior plaster is being done at the West, South, and North elevations.







# FULLERTON COLLEGE

## 700 Building (Exterior)





# FULLERTON COLLEGE

## 900 Building (Interior)

Auto, Printing and Machine

Installation of mechanical, electrical, plumbing, and fire systems work continues, including testing of fire sprinklers. Framing of interior walls continues.



Installation of HVAC control conduits and roll-up door tube steel at South elevation has begun.





# FULLERTON COLLEGE

## 900 Building (Interior)







# FULLERTON COLLEGE

## 900 Building (Exterior)



Framing work continues on the roof and all exterior walls. Also, installation of the water line tie-in for the water loop has begun.





# FULLERTON COLLEGE

## 900 Building (Exterior)



This concludes our slide presentation

Please let us know if we can answer  
any questions for you.